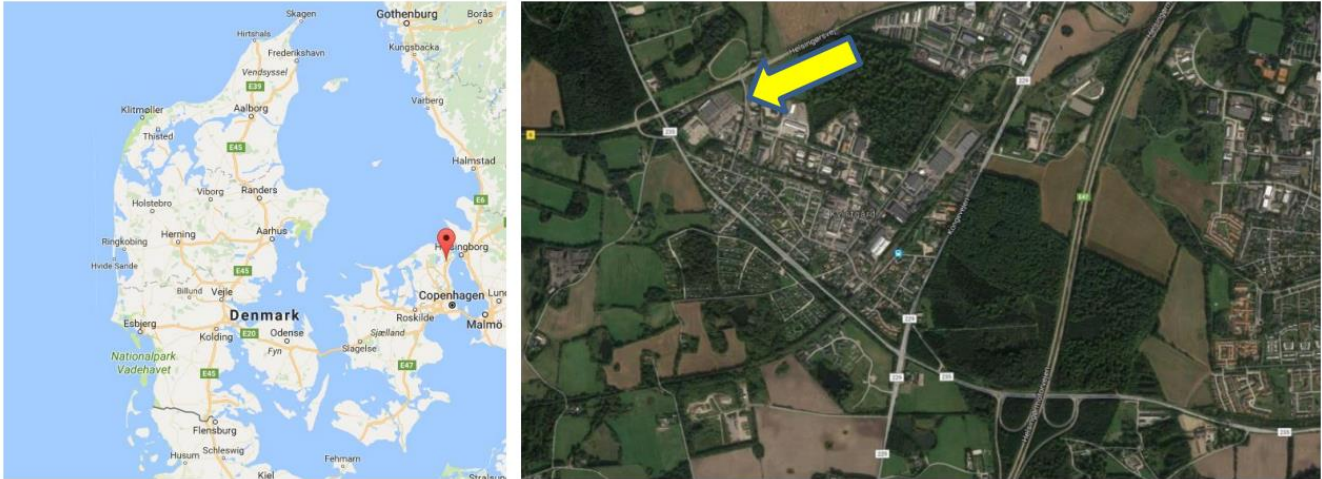


Directions to CTS | Ferroperm

CTS | Ferroperm is located in Kvistgaard approximately 60 km from Copenhagen Airport in Denmark. The map shows our location and you can find driving directions from Copenhagen Airport and from Helsingør below.



Directions to CTS | Ferroperm from Copenhagen

By Car

Take motor way E20 Direction North, and continue by motorway E47/E55 (Direction Helsingør).

Take the exit no. 4, "Kvistgaard", and turn left.

At the first roundabout continue straight on until you can see the sign to the Industry area ("Industrikvater").

Then turn left at the second road ("Munkegårdsvej").

Then turn right at the second road ("Porthusvej")

The above map can also help you find CTS | Ferroperm

From Copenhagen center it takes approximately 45 min and approximately 1 hour from the airport. CTS | Ferroperm is located in number 4.

By Train / Taxi

Take the Regional train from Copenhagen Airport (or Malmø) towards Helsingør and exit at Espergærde station.

The journey by train will take approximately 1:15 hour.

At Espergærde station a taxi can bring you to CTS | Ferroperm (10 minutes trip).